

TUBE AND COUPLER SCAFFOLDING

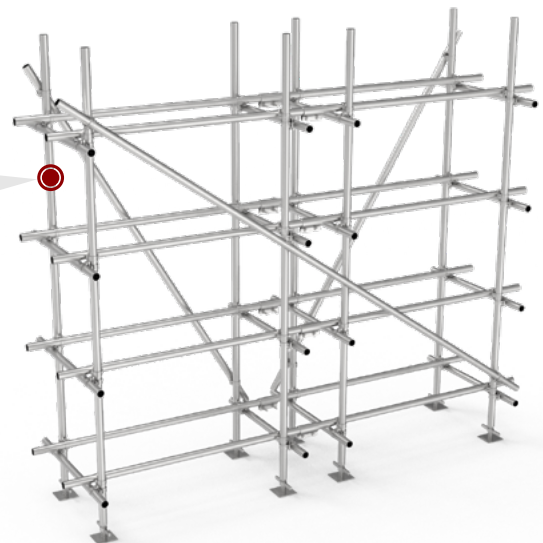
TUBE AND COUPLER SCAFFOLD

+

Tube and coupler scaffold, also known as tube and clamp scaffold, is a scaffolding mainly consisting of steel tubes and couplers. It allows connecting steel pipes and couplers at any interval, as long as there is no restriction due to engineering rules and regulations. Therefore, it can create a variable geometry scaffold system with strong adaptability to building and structures with complex geometries, and perform construction and maintenance works on the platform.

It can be flexibly assembled into birdcage scaffolding, suspended scaffolding and supported scaffolding. It is frequently used in refineries, petrochemical plant environments and power plants for construction, maintenance and restoration works. In addition, it can also be used to build ramps, sheds, stands and other temporary structures.

+

Steel Tube


It is the main part of the tube and coupler scaffold.

- Steel pipe execution standard: EN 39 / BS 1139 / ASTM A513-07.
- Material: Q235 steel or Q345 steel.
- Surface treatment: hot dip galvanized or PVC coated.
- Packing: 37 or 61 pieces/bundle.

Execution Standard	Tube Diameter	Tube Wall Thickness	Tube Weight	Tube Length	Zinc Content
EN 39	48.3 mm	3.2 mm	3.56 kg/m	0.3–6.3 m	≥ 40 microns
JGJ 130	48.3 mm	3.6 mm	3.97 kg/m	0.3–6.3 m	≥ 40 microns
EN 74	48.3 mm	4 mm	4.37 kg/m	0.3–6.3 m	≥ 40 microns

TUBE AND COUPLER SCAFFOLD

+

Double Coupler

It is used to connect two steel tubes that intersect vertically. It relies on the friction force between the coupler and the steel tube to transfer the load.

Execution Standard	Suitable Tube	Bolt	Nut Sizes	Weight	Material
BS 1139 / EN 74	48.3 mm	T-bolt	17, 19, 21, 22, 23 mm	1.05 kg	drop forged carbon steel

Double Coupler



+

Sleeve Coupler

It is used to connect and extend the length of two steel pipes.

Execution Standard	Suitable Tube	Weight	Material
BS 1139 / EN 74	48.3 mm	0.95 kg	drop forged carbon steel

Sleeve Coupler



Jack Base



Swivel Coupler



+

Jack Base

It serves as the base of the scaffolding system. It helps keeping the scaffolding system stable by adjusting the height of the screw rod.

Overall Height (mm)	Effective Length (mm)	Base Plate Length (mm)	Base Plate Thickness (mm)
600	460	140	5
800	530	140	5

+

Swivel Coupler

It is used to connect two steel pipes that intersect at any angle.

Execution Standard	Suitable Tube	Bolt	Nut Sizes	Weight	Material
BS 1139 / EN 74	48.3 mm	T-bolt	17, 19, 21, 22, 23 mm	1.25 kg	drop forged carbon steel

TUBE AND COUPLER SCAFFOLD

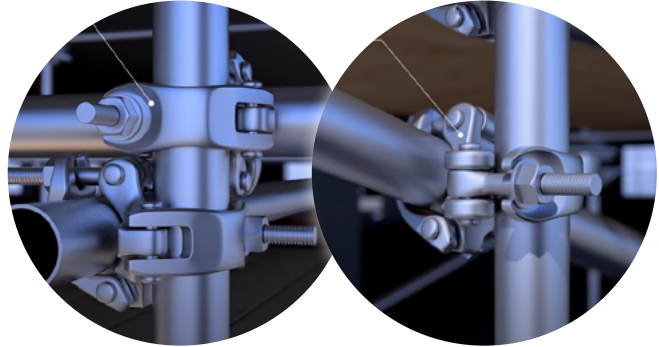
+

Features

- All steel tubes comply with EN 39 / BS 1139 / ASTM AA513-07 executive standards.
- All forged couplers meet BS 1139 / EN 74 executive standards.
- Galvanized surface treatment enables it enjoying a long service life.
- Few basic components, easy to install.
- Strong flexibility and can meet the construction requirements of various geometric structures.

+

Connection Details

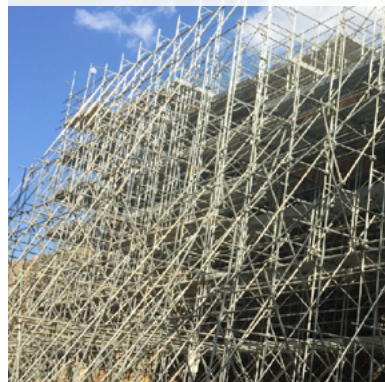


Forged double coupler connection details

Forged swivel coupler connection details



Building maintenance



Structure access



Chemical plant maintenance

SCAFFOLDING APPLICATION



Tunnel construction



Building decoration